

- 1
- 2
- 3
- 4
- 5
- 6
- 7
- 8
- 9
- 10
- 11
- 12
- 13
- 14
- 15
- 16
- 17
- 18

MAIN SPECIFICATIONS

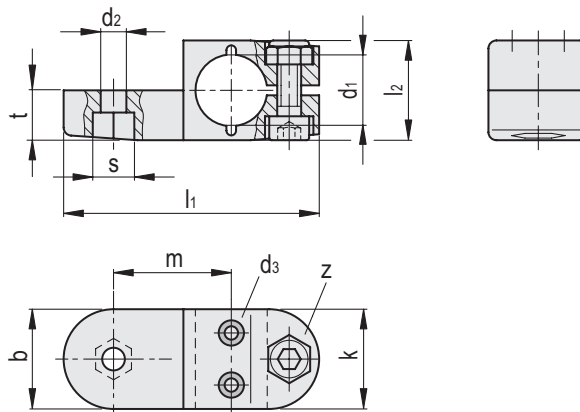
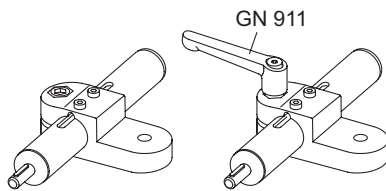
- Aluminium
- Epoxy resin coating
- Black, RAL 9005, textured finish **SW**
- Sleeve bearing
- Plastic (PTFE)
- Cylindrical-head screw DIN 912
- Stainless Steel AISI 304
- Hexagon nut DIN 985
- Stainless Steel AISI 304
- Self-locking via polyamide ring

FEATURES AND APPLICATIONS

Swivel clamp linear actuator connectors GN 277.1 are based on swivel clamp connectors. The additionally provided mounting holes are used to connect to the drive key of a linear actuator. Bore with the designation **G** are equipped with sleeve bearings. With the screw location **z**, the play of the guide bore d1 can be adjusted or the linear actuator connectors can be clamped after adjustment. For quick clamping without tools, the socket cap screw can be replaced by the adjustable hand levers GN 911 (see page -).

ACCESSORY

Adjustable Hand Levers GN 911 (see page -).



Conversion Table	
1 mm = 0,039 inch	
d1	
mm	inch
18	0.70

GN 277.1-B

Code	Description	d1											z	Clamping kit	⚖
		Bore without sleeve bearing	s	d2	d3	b	k	l1	l2	m	t	z			
GN.60091	GN 277.1-B18-2-SW	B 18	10	6.5	M 3	25	25	64	25	29.5	12.5	M6-20	GN 911-45 / GN 911-63	64	

GN-277.1-G

Code	Description	d1											z	Clamping kit	⚖
		Bore with sleeve bearing	s	d2	d3	b	k	l1	l2	m	t	z			
GN.60093	GN 277.1-G18-2-SW	G 18	10	6.5	M 3	25	25	64	25	29.5	12.5	M6-20	GN 911-45 / GN 911-63	64	

Tube connectors